

USER MANUAL

EYE MINI LITE

Important: Read before use



UNEEKOR

EYE MINI LITE fuses cutting-edge technology and effortless usability! Elevate your golf simulation experience to new heights with state-of-the-art features, all wrapped in a sleek, user-friendly design



The EYE MINI LITE user manual is designed to assist you in better understanding your launch monitor, different set-up methods, installation, and operation.



LITE UP YOUR GAME



Table of Contents

What's Included	4
EYE MINI LITE Overview	5
Aligning Your EYE MINI LITE	9
Getting Setup	12
Applying Club Stickers	18
Safety Notice	20
Support	22
Appendix	23
Data	23
External Links	26



What's Included



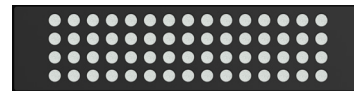
Power Cable



Ethernet Cable



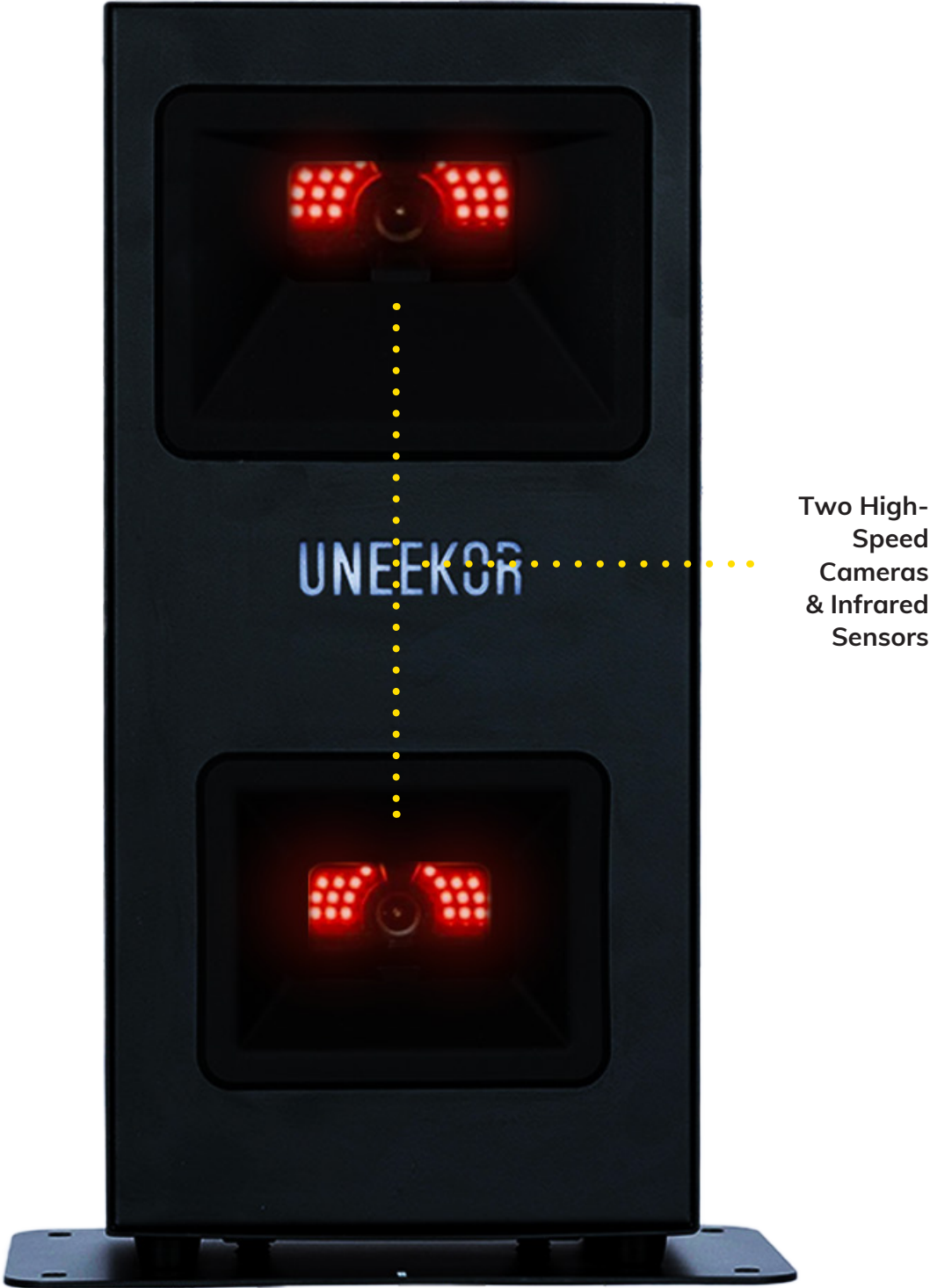
Club Sticker
Tweezers



Club Stickers
(20 sheets)

EYE MINI LITE Overview

Front



EYE MINI LITE Overview

Rear



Kensington Lock Slot
Easily secure your EYE MINI LITE

Power Button
Turns the Device On/Off

Power Port

Ethernet Port
Utilized to connect directly to PC via ethernet cable(CAT6)

EYE MINI LITE Overview

Ball Data

Ball Speed, Side Spin, Back Spin, Side Angle, Side Distance, Launch Angle, Carry Distance, Descent Angle, Apex (Peak Height), Distance to Apex, Flight Time, Run, Total Carry, Spin Axis

Club Data

Club Speed, Attack Angle, Smash Factor, Club Path

* EYE MINI LITE Club sticker required

Measurements

Ball Speed	Putter : 0.22 mph – 67 mph
	Driver / Iron : 11 mph – 223 mph
Launch Angle	Driver : -5 ~ 50°
	Iron : 0.1 ~ 80°
Ball Spin	Back Spin 12,000rpm

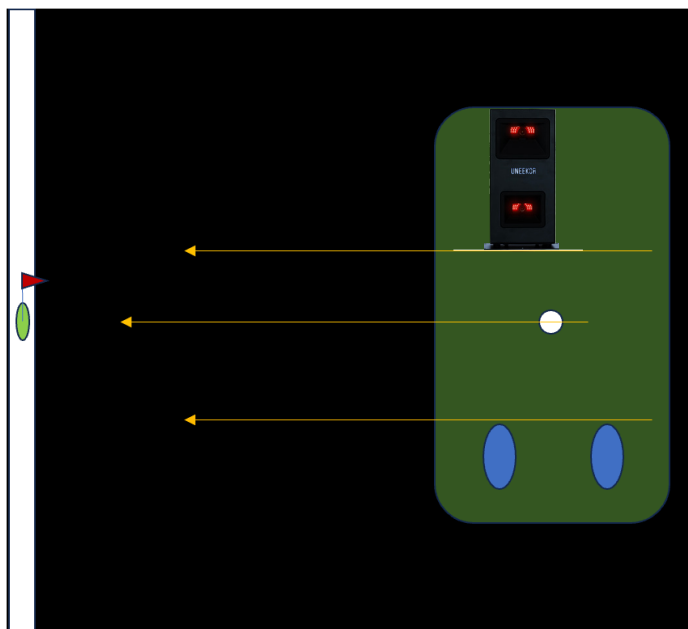
EYE MINI LITE Overview

Description	Compact Launch Monitor	Model Name	EYE MINI LITE
Basic Software	VIEW	Network	1Gbps, LAN, RJ-45 Connector
Sensor Location	Ground	Power	Cable Provided
Sensor Position	Ball Position(Front)	Size	353mm(h) x 220mm(l) x 120 mm(w)
Sensor Technology	High Speed Camera	Certificate	KC, CE, FCC, VCCI
Power	Adapter(Outlet)	Color	Black, White
Golf Ball Use	Any Ball	Operating Temp.	-10°F~122°F; 14°C~50°C
		Weight	8lbs



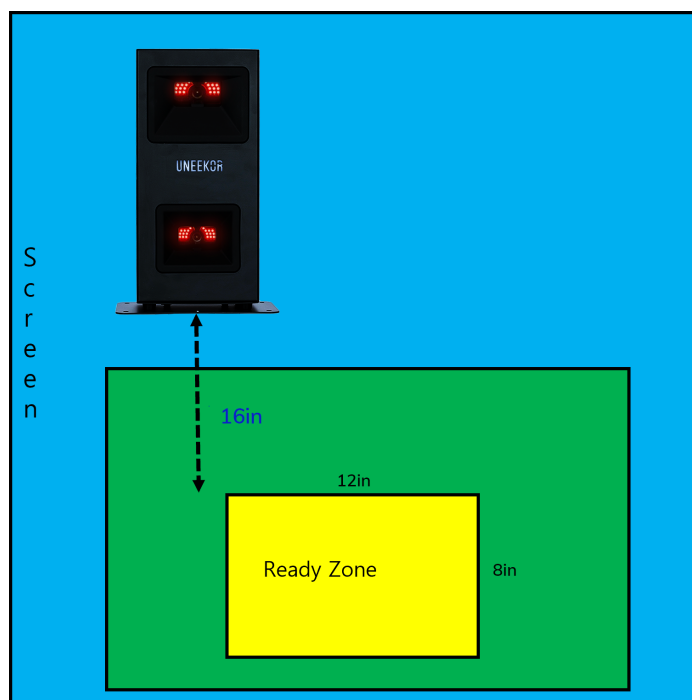
Aligning Your EYE MINI LITE

TARGET ALIGNMENT



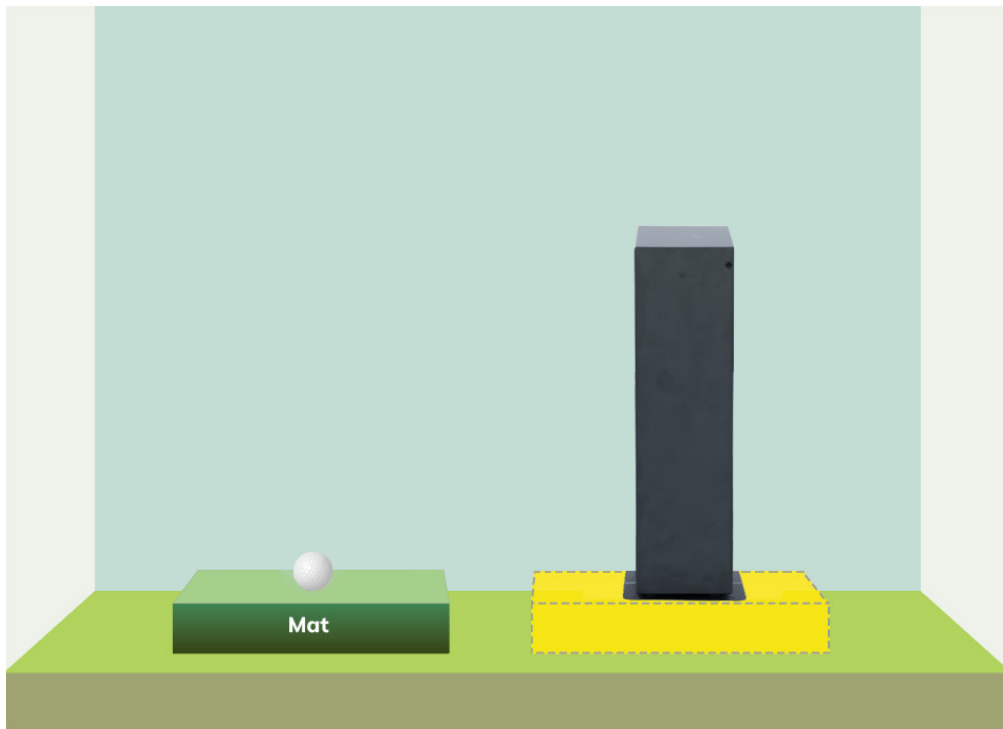
To ensure proper measurements for both swing path and club data, please ensure EYE MINI LITE is setup and aligned parallel to your target line. **DO NOT ALIGN EYE MINI LITE directly with your target.**

HITTING ZONE



To ensure EYE MINI LITE reads your shots, make sure your ball is set up in the hitting zone. EML will display a GREEN Uneekor logo on the front indicating light when the ball is in the proper zone and EML is ready.

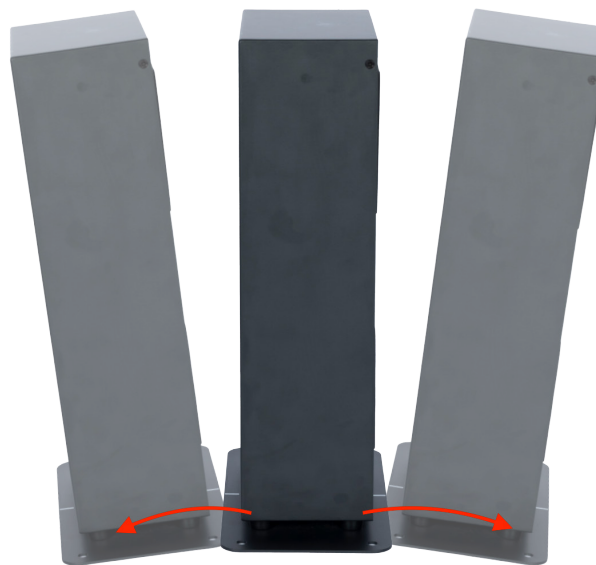
Aligning Your EYE MINI LITE



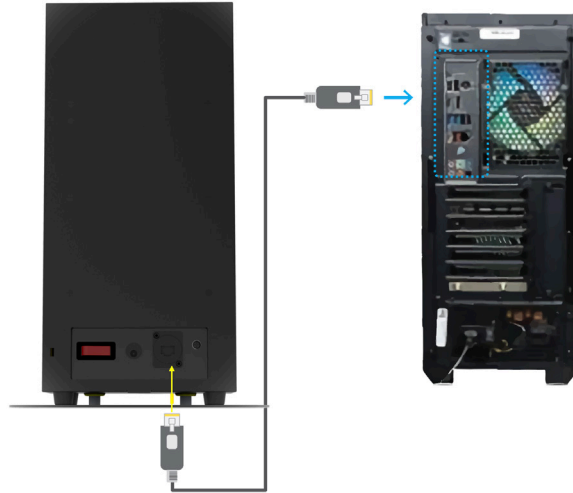
Ensure EYE MINI LITE is level with the hitting area.

Aligning Your EYE MINI LITE

While EYE MINI LITE has a sensor that measures inclination for small adjustments, it is recommended you setup EYE MINI LITE on a level and secure surface.



Getting Setup



Connecting EYE MINI LITE (Required)

Connect your EYE MINI LITE to your PC with the included ethernet (CAT6) cable. After this is complete, please follow the next steps.

1. Create or login to your Uneekor account.

[My.Uneekor.com](https://my.uneekor.com)

2. Download Uneekor Launcher to your PC. The Uneekor Launcher file is available under the resources section of Uneekor.com or can be downloaded with the link below.

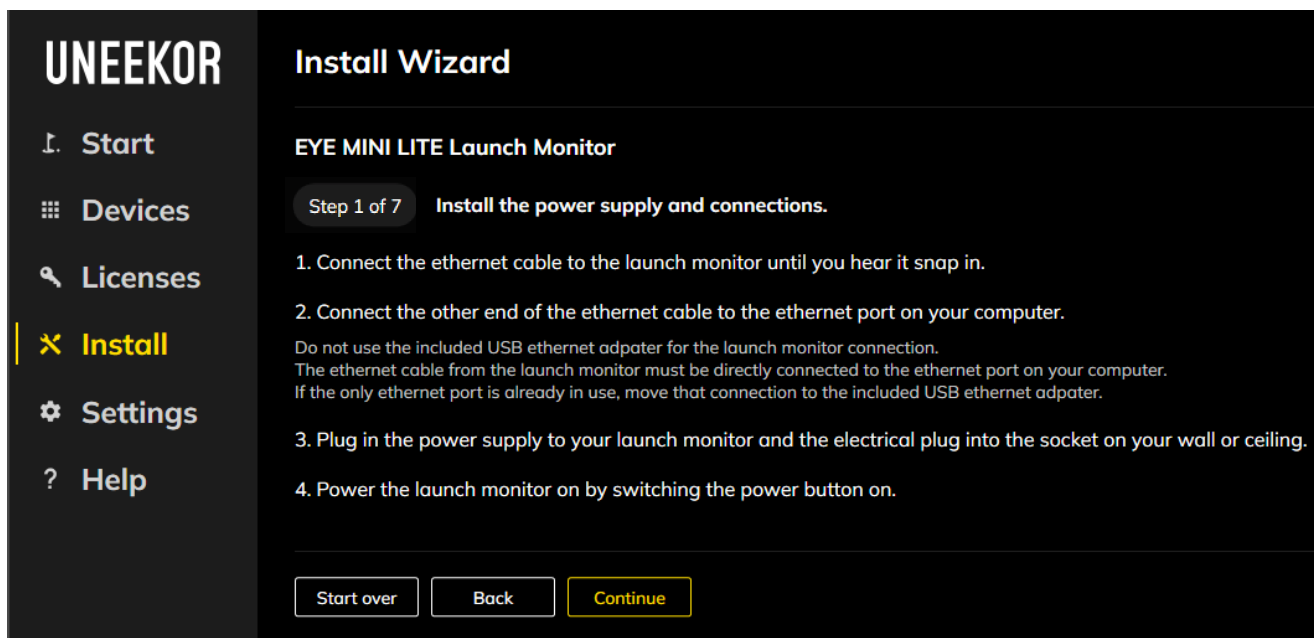
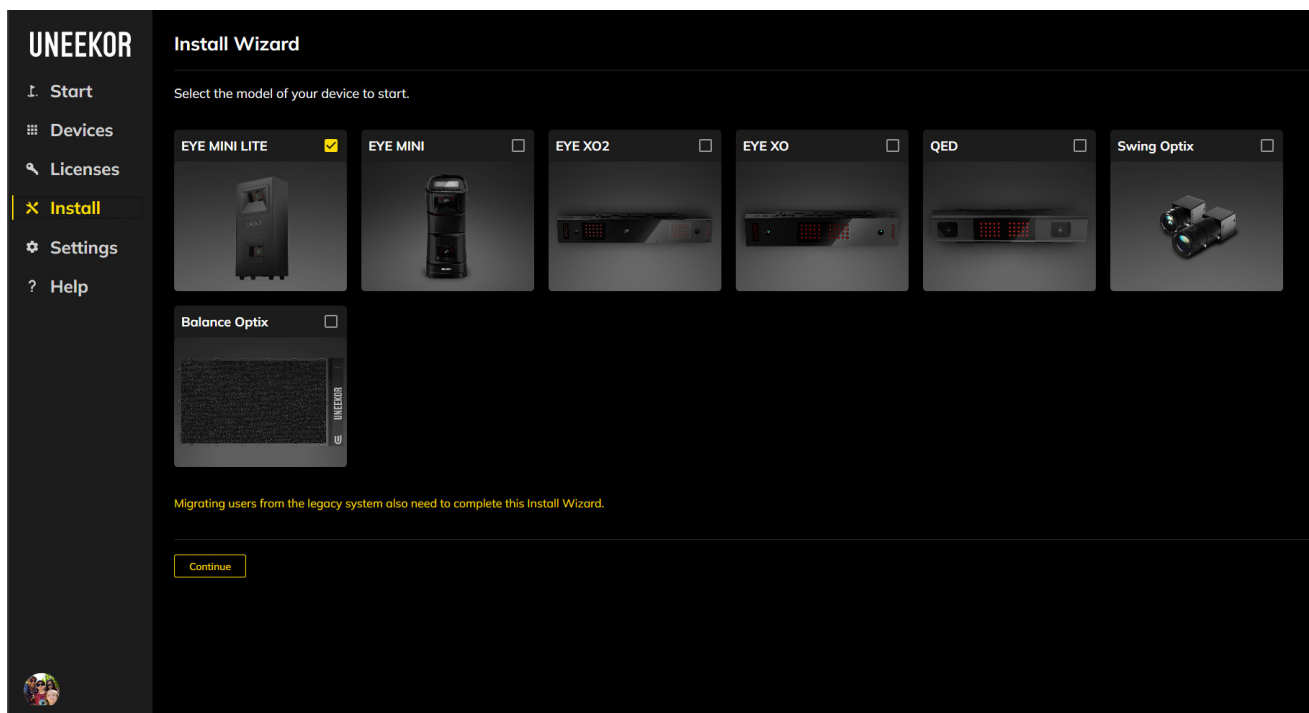
[Uneekor Launcher.exe](#)

For any assistance using Uneekor Launcher, please reference the guide below.

3. Open Uneekor Launcher on your PC and go to the “Install” tab on the left-hand side and select EYE MINI LITE, then continue.

Select EYE MINI LITE from the list of options. Follow the step-by-step instructions on the Uneekor Launcher window to set up your EYE MINI LITE. (During this installation process your EML will be registered to your account.)

Getting Setup



Step 1

Connect both the provided power cable and ethernet cable to your EYE MINI LITE and click Continue to follow the steps in the installation wizard.

Getting Setup

Step 2

EYE MINI LITE install wizard will recognize your ethernet adapter and click Continue to move to Step 3.

UNEKOR

- Start
- Devices
- Licenses
- Install**
- Settings
- Help

Install Wizard

EYE MINI LITE Launch Monitor

Step 2 of 7 Select and configure the ethernet network interface connected to your device.

Select the ethernet network interface (LAN port) connected to your device.

Refresh Reset

Ethernet Select Configuration completed!

If "Select" button does not work properly, set a static IP address as below manually on [Windows network settings](#).

IP assignment: Manual
IPv4: On
IP address: 192.168.1.100
Subnet mask: 255.255.255.0
Subnet prefix length: 16

Start over Back Continue

Step 3

Next you will be prompted to register your EYE MINI LITE to your Uneekor account. Please click "Register to your account"

UNEKOR

- Start
- Devices
- Licenses
- Install**
- Settings
- Help

Install Wizard

EYE MINI LITE Launch Monitor

Step 3 of 7 Register and select a device to install.

- Find your launch monitor from your computer and network.
If properly connected devices are not shown, power the devices off and power back on.
- Register your launch monitor to your Uneekor Account.
- Select a device to begin install.

Refresh

EYE MINI LITE
Serial Number 400000000000
Address
Status OK

Register to your account

Unable to select

EYE MINI LITE
Serial Number 400000000000
Address
Status OK

Registered

Selected

Start over Back Continue

Getting Setup

Step 4

Select your licenses, it's recommended to hit Select All, then click the Activate button.

UNEKOR

- Start
- Devices
- Licenses
- Install**
- Settings
- Help

Install Wizard

EYE MINI LITE Launch Monitor

Step 4 of 7 **Activate your license keys.**

1. If you have new license keys, register to your Uneekor Account.

2. Select license keys to activate for this computer.

The license keys for the selected launch monitor have already been selected. Select additional license keys to activate.

Tied device	Product	Status	Computer name	Duration
<input checked="" type="checkbox"/> Any devices	Gameday	Activated	JMSIMPC	Perpetual
<input checked="" type="checkbox"/> Any devices	REFINE	Activated	JMSIMPC	Perpetual
<input checked="" type="checkbox"/> Any devices	REFINE+	Activated	JMSIMPC	Perpetual
<input checked="" type="checkbox"/> Any devices	Uneekor Groove	Activated	JMSIMPC	Perpetual
<input checked="" type="checkbox"/> Any devices	VIEW - Add-on: AI Engine	Activated	JMSIMPC	1-year
<input checked="" type="checkbox"/> My EYEMINILITE_8279	Player Package	Ready		Perpetual
<input checked="" type="checkbox"/> My EYEMINILITE_8279	Pro Package	Ready		3-month
<input checked="" type="checkbox"/> My EYEMINILITE_8279	REFINE	Ready		1-month

3. Activate the selected license keys.

To activate the selected license keys for this computer, click "Activate" button.

New limited-time licenses have been selected.
Once activated, the license period will begin, and it cannot be canceled or renewed.

Once activated, you will be able to click the Continue button to move on to Step 5.

3. Activate the selected license keys.

To activate the selected license keys for this computer, click "Activate" button.

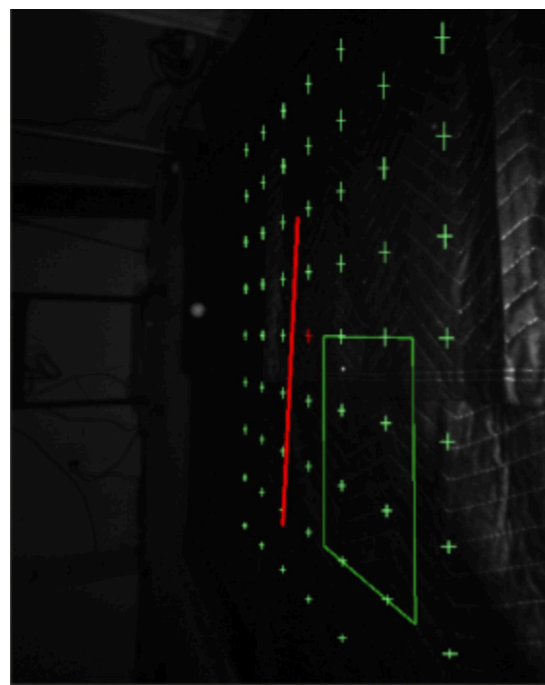
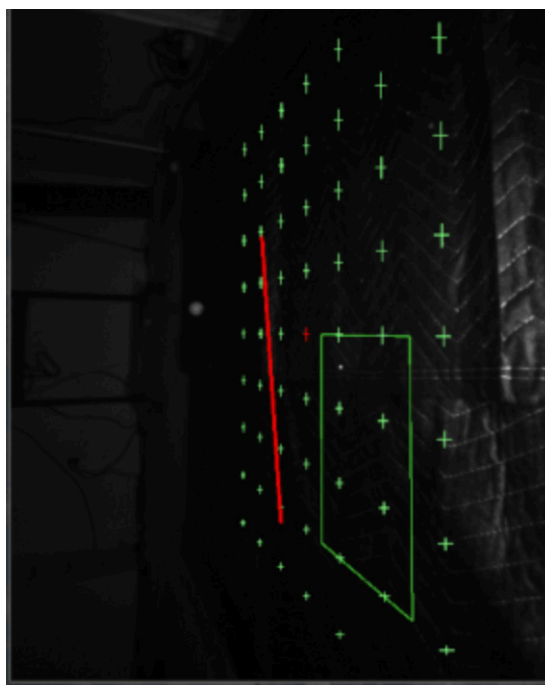
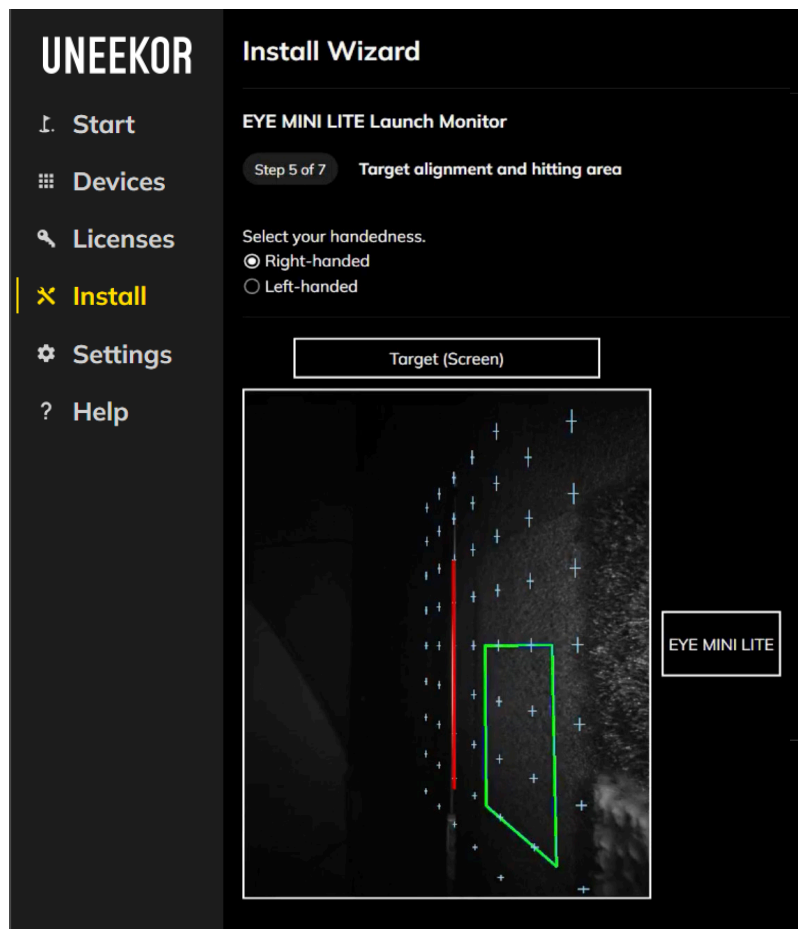
Activation completed!

Getting Setup

Step 5

Step 5 will allow you to select right or left handed and walk you through calibrating and aligning your EYE MINI LITE to your hitting screen. (For best accuracy, ensure the red target line, is aligned perpendicular to your hitting screen and parallel to the green square, which represents the hitting zone.)

In these examples, you can see EYE MINI LITE is NOT aligned correctly, as the target line is neither perpendicular to the hitting screen nor parallel with the hitting zone. If you see alignment results similar to these, please realign EML so it is

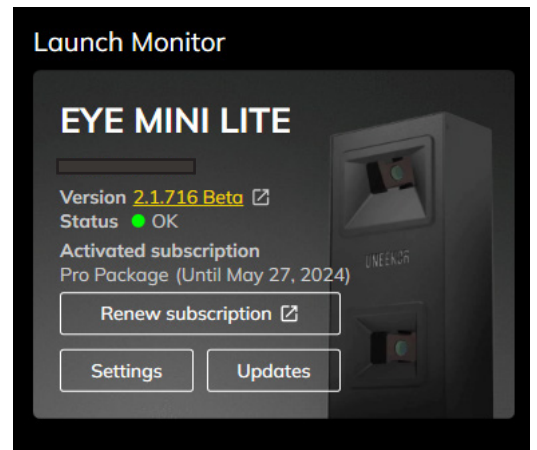
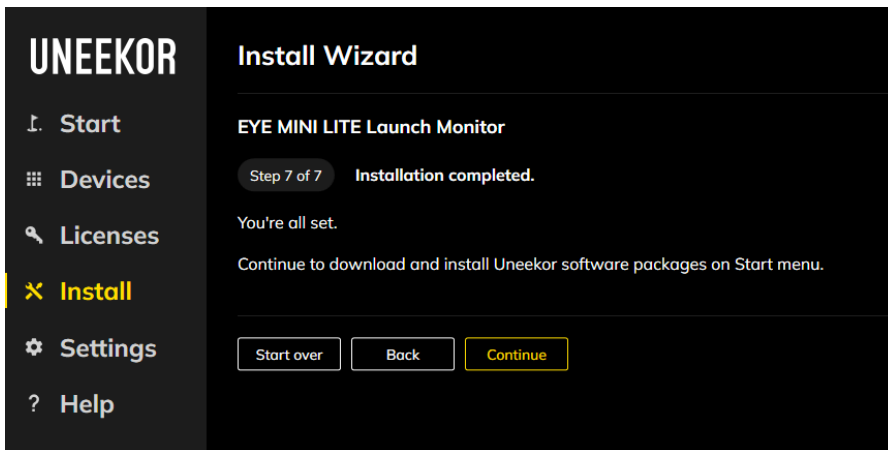
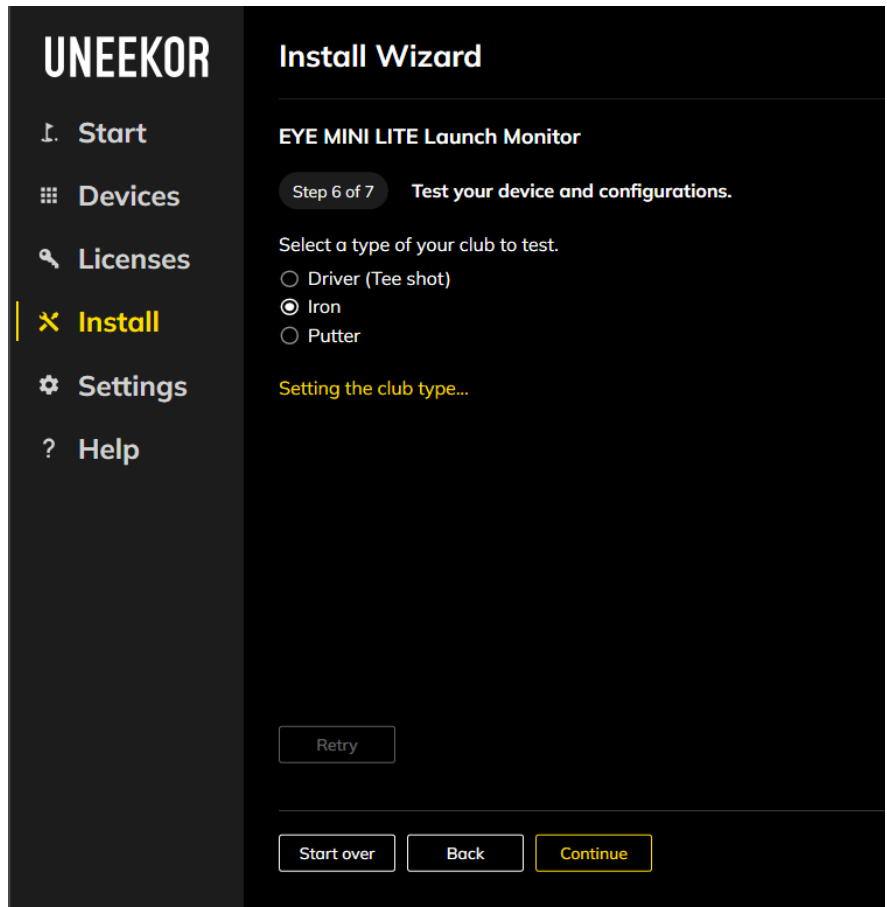


Getting Setup

Step 6

Next, it will ask you to take a test shot. Select the applicable club you are hitting and place a ball in the hitting zone.

After you hit a shot, the Club Optix footage will display the impact photo and show the ball speed. If this appears, then press “Continue” to go to the last step.



You are now done with the installation process. Please navigate to the “Start” tab to install your VIEW software, Third-party Connector, and REFINE / REFINE+ (if included with your purchase).

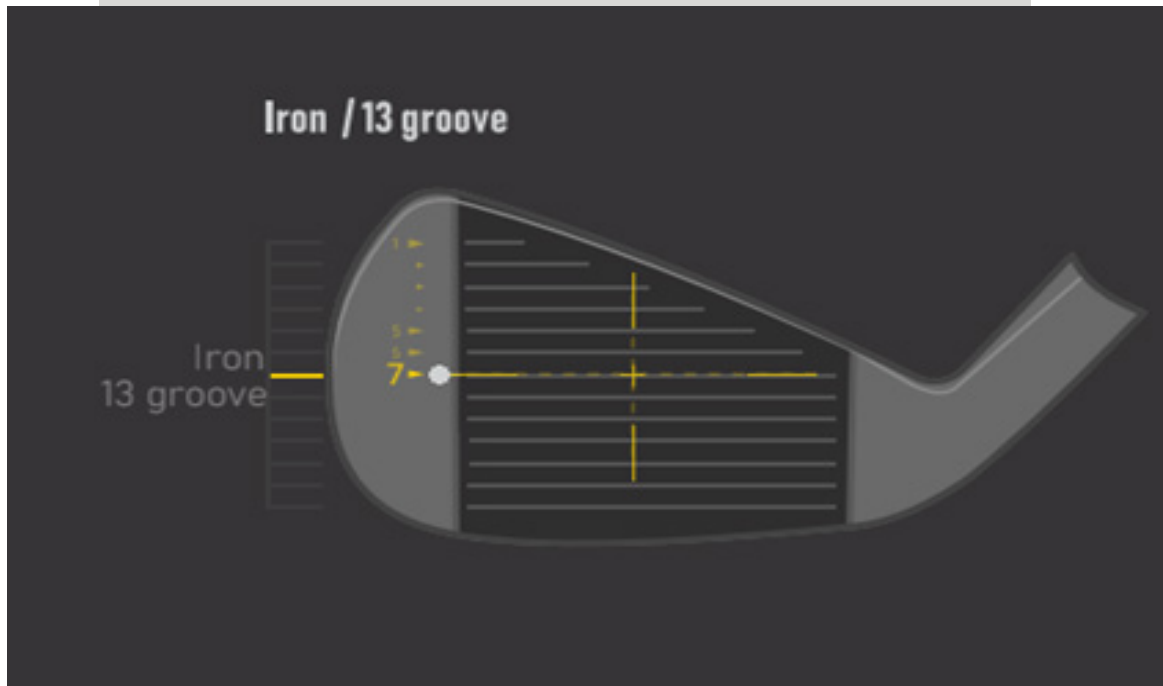
Applying Club Stickers

*Club stickers are not required to use EYE MINI LITE; however applying club stickers allows EYE MINI LITE to read the club face and interpret club data. EML utilizes a single club sticker.

To apply club stickers, please follow below.

Irons:

Place the single club sticker on the toe side of the club face, 7 grooves up from the bottom of the club. Make sure the club sticker is on the smooth side of the face and not on the grooves.



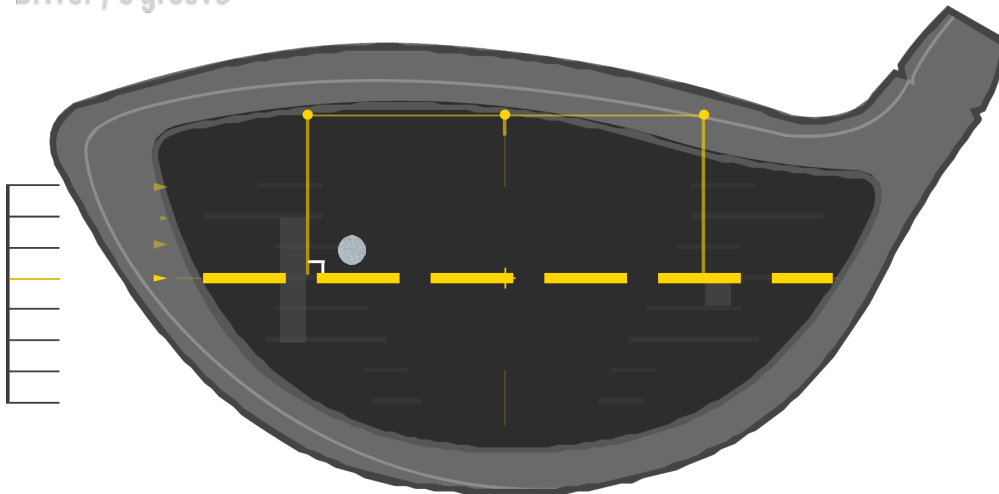
***If the club sticker is not applied, club data will not be provided**

Applying Club Stickers

Driver:

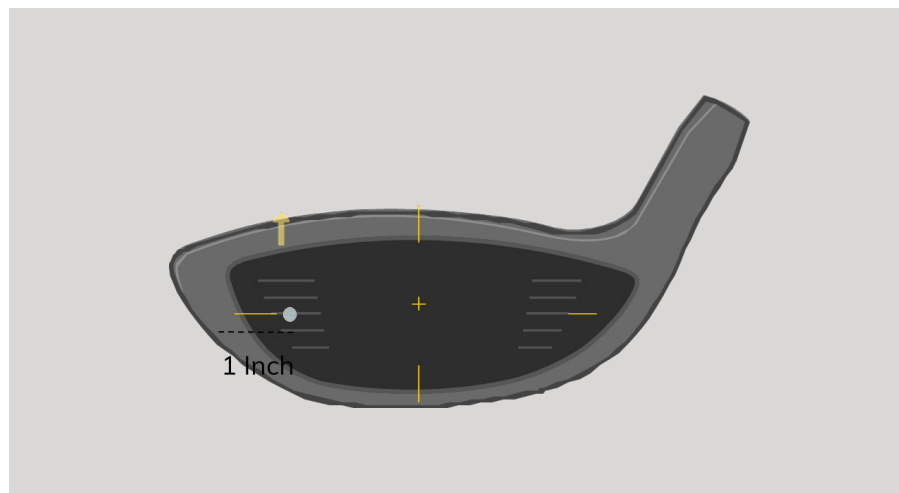
Place the sticker 1 inch from the edge of the toe and 5 grooves up for drivers with 8 grooves. For drivers with 5 grooves, place the club sticker 1 inch from the toe and on the 3rd groove.

Driver / 8 groove



Wood/ Hybrid:

For woods and hybrids that have 5 grooves, the club sticker is placed 1 inch in from the toe and level with the 3rd groove.



***If the club sticker is not applied, club data will not be provided**

Safety Notice

Always ensure your EYE MINI LITE is free of water and powered off before storing your device. Uneekor recommends storing EYE MINI LITE in a cool and dry environment. Ensure the temperature of the storage space is no colder than 20-degrees Fahrenheit and no warmer than 110-degrees Fahrenheit.

****DO NOT leave your EYE MINI LITE in cold or hot temperatures for extended periods of time.****



Safety Notice

1. If water has entered the device, disconnect the device from external power and power off. Continued use in this state can cause fire or electric shock.
2. Only use the power adapter that came with the device.
3. DO NOT disassemble, change, or attempt to repair the device. If sticker seal on the bottom is tampered with, warranty will be nullified.
4. DO NOT use this device in environments where high humidity, smoke, or dust is present.
5. DO NOT look directly into the infrared cameras when the device is turned on.

Support

Technical Support

Mon - Fri 6:00am - 6:00pm PST

Sat - Sun 8:00am - 5:00pm PST

Email: support@uneekor.com

For any comprehensive support please contact our
Support Team

Email: Support@Uneekor.com

To schedule an appointment with support, visit our website

[Support | Uneekor](#)



Appendix

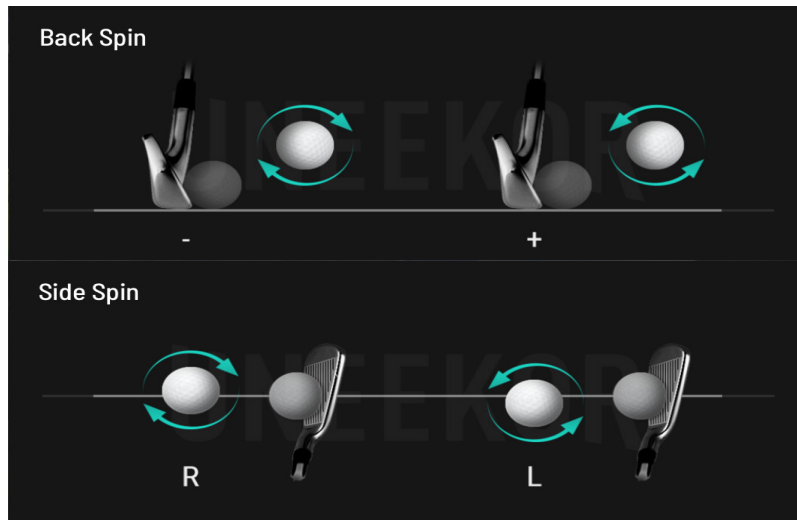
Ball Data

Ball Speed



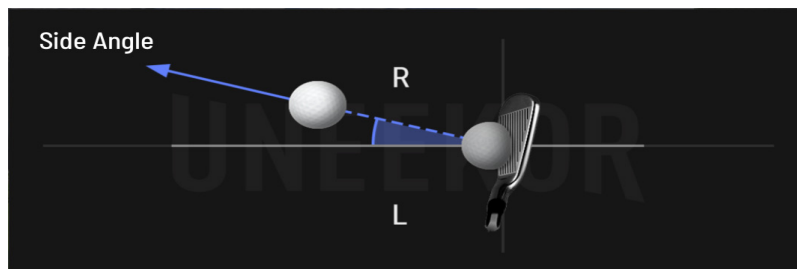
Pace at which ball is traveling when it leaves the club face after impact

Back/Side Spin



Rotations of the ball either left, right, or backwards

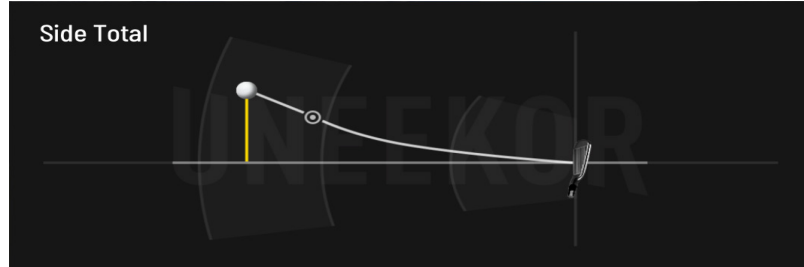
Side Angle



Degree angle, left or right, of ball when leaving club face left or right

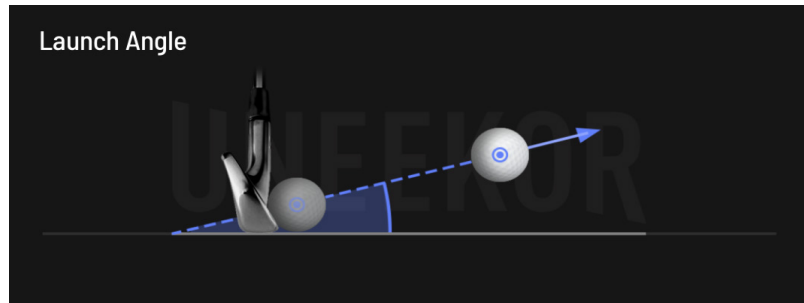
Appendix

Side Distance



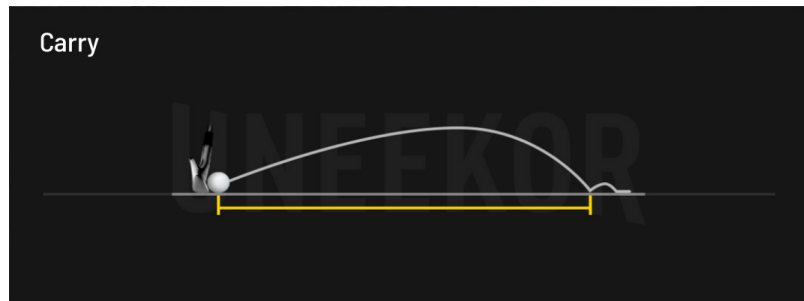
Distance of ball, left or right relative to starting point of shot

Launch Angle



Vertical angle of ball after leaving club face

Carry Distance



Total distance ball traveled in the air

Appendix

Club Data

Club Speed



The speed of the club head at impact

Attack Angle



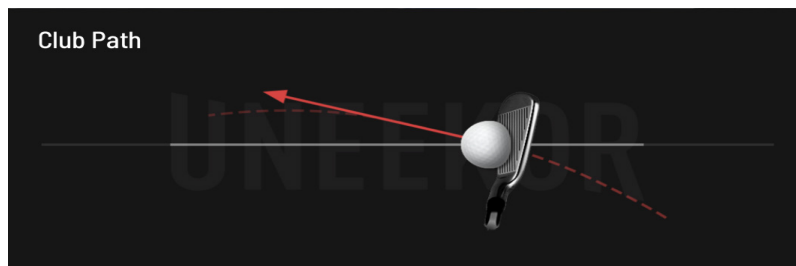
The Up and Down movement of the club head at the time of impact, measured relative to the horizon

Smash Factor



The amount of energy transferred from the clubhead to the golf ball

Club Path



The in to out, or out to in movement of the club head's geometric center at the center at the time of impact. Club Path is the direction (right or left) the club head is moving at impact and is measured relative to the target line

External Links

[Launcher Guide](#)

[My.Uneekor.com](#)

[Uneekor Support](#)

[Launcher Download Link](#)



MASTER YOUR PASSION

UNEEKOR, INC.

15770 LAGUNA CANYON RD
SUITE 100
IRVINE, CA
92618

TEL: 1-(888) 262-6498

SALES@UNEEKOR.COM

SUPPORT@UNEEKOR.COM

